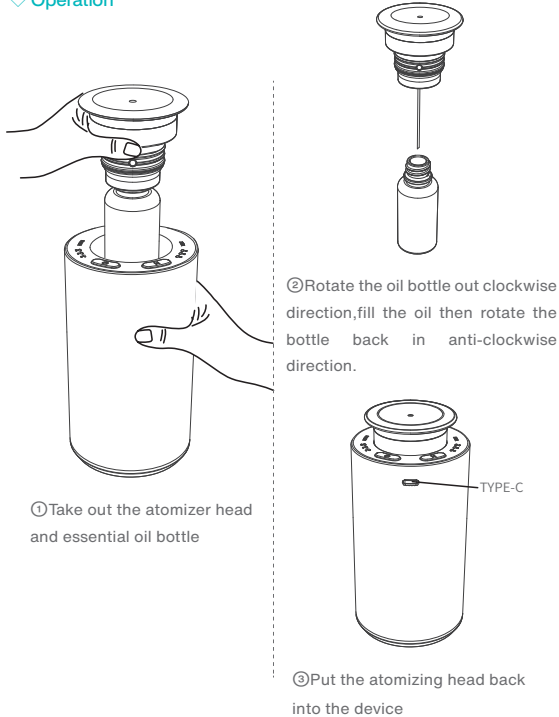


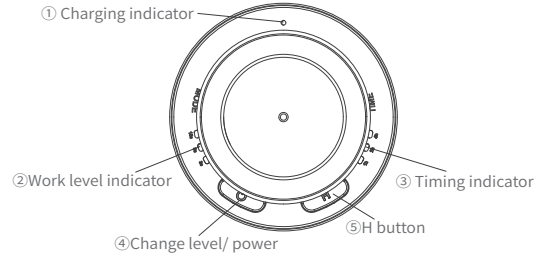
Please read carefully before use and keep it properly.

We supply warranty within 12 months after purchase date for all qualified machines.

◇ Operation



◇ Key & Indicator



① Charging indicator-Plugging in USB will automatically charge

indicator	instructions
off	No USB charging input
Flashing red	Low battery
red	Charging
Flashing green	Fully charged

② Work level indicator

White light on for 3s	Work level 1: 3s on, 177s off
White light on for 8s	Work level 2: 8s on, 172s off
White light on for 15s	Work level 3: 15s on, 165s off

③ Timing indicator

off	Shutdown or sleep mode
White light on for 1h	Home mode: work for 1h then turn off
White light on for 2h	Home mode: work for 2h then turn off
White light on for 4h	Home mode: work for 4h then turn off
Green light on	Car mode: Start working when the car starts, sleep after the car turns off for 2 minutes

④ Change level

Long press for 1.5 seconds: on/off

Press: Change work level

⑤ H button

Long press for 3 seconds: Change between home or car mode

Press: home mode change the timing level, car mode doesn't have function

Tilt Alarm: In its working or charging state while power off, when tilted beyond 45-degree angle, the device beeps and the red charging indicator flashes

◇ Product Parameter

- Weight: 0.4
- Voltage: DC 5V
- Power: 2W
- Size: 72×72×145mm
- Capacity: 10/20ml
- Applicable range: 10-50m³

◇ Packing

Scent diffuser x1, USB power cable x1, user manual x1.

◇ Equipment maintenance

If the diffuser is not used for a long time, 95% industrial alcohol should be added into the refined oil bottle to clean the nozzle and other parts inside the diffuser. **Tip:** Maintain the diffuser with 95% industrial alcohol at least every 1-2 months.

Specific operation: add 95% industrial alcohol into the empty bottle, turn on the diffuser and run for 10-15 minutes after, then turn off the diffuser and pour the alcohol, then screw back the bottle to machine.

◇ Warranty

1.The Warranty is suitable for new machine but not reselled or second hand products.

2.Within 12 months after purchase date, Warranty is offered for all qualified machines. During warranty,we will offer repair services and the free parts but not include essential oil.

3.The warranty card & purchase Invoice are needed if after-sales service is required. Please contact us within warranty if any problems.

4.The following is not suitable for free warranty service:

- ① Damage & problems caused by Accidents & Fire.
- ② Not used properly and wrong operation.
- ③ Repaired by the unprofessional and cause some parts damaged.
- ④ Damaged during transportation.
- ⑤ Without our warranty card.
- ⑥ Without proper cleaning for a long time
- ⑦ The machine work time out.
- ⑧ Machines & Parts not from us.
- ⑨ Machines not purchased from official sales channels.
- ⑩ Send the machines back without permit from manufacturer.

◇ Notice

1.Please carefully read the Instruction before installation, and keep the User manual to check if need at anytime

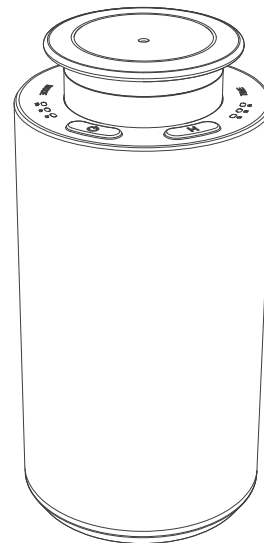
2.Please make sure the machine upright ,no leaking and no down; or may damage the device and parts

3.Please do not open the machine by yourself, If problems, please contact us promptly.

SMART SCENT DIFFUSER



USER MANUAL



Please read the manual carefully and keep it properly before use